

TSCI 5077
Practicum in Translational Science

Spring 2023

CLASS DAYS and TIME: Determined by each *individualized plan of student activities* as approved by the course director.

CLASSROOM: Based on the location of each *individualized planned student activities* as approved by the course director.

COURSE DIRECTOR: Yong-Hee Patricia Chun, DDS, MS, PhD

OFFICE LOCATION and HOURS: DENT 3.589U, Monday – Friday (8:00 am – 5:00 pm by appointment)

EMAIL: ChunY@uthscsa.edu

TELEPHONE: 210-567-3520 (Chun)

READ THIS DOCUMENT CAREFULLY – YOU ARE RESPONSIBLE FOR ITS CONTENTS

COURSE DESCRIPTION AND OBJECTIVES

This elective course provides an opportunity for participation in unique clinical and translational research activities that are highly individualized for each student on the basis of prior experience and research interests.

Pre-requisites – Approval by Dr. Yong-Hee Patricia Chun

Semester credit hours – 1.0 – 3.0 SCH

COURSE ORGANIZATION

Course format:

This course will consist of:

- Meeting personally with the course director for the purpose of planning and monitoring of planned activities
- Arranging and completing practicum activities
- Completing practicum forms and submitting the Student Planned Activity Form within the first week of the course start date. Thereafter, completion and submission of the Monthly Student Activities form within the first week of each month throughout the semester on Canvas. The form has to be signed by the Thesis supervisor.
- Completing a written report about the practicum activities describing what was accomplished in developing characteristics of the translational scientist (see below).

- A poster presentation of the project at the IIMS Frontiers of Translational Science Research Day is highly encouraged.

Practicum Activities and Expectations for completion of the 48 – 144 contact hours approved by the course director:

The translational science training activities will be approved on an individual basis in consultation with the course director prior to the beginning of the term. Thereafter, the student will prepare a completed monthly activity form and submit it to the course director within the first week of the preceding month. Depending on the number of semester credit hours (1-3 SCH) planned, 48 – 144 contact hours of approved translational science training activities are required to fulfill the requirement for this course.

1 SCH	48 contact hours of approved translational science training activities
2 SCH	96 contact hours of approved translational science training activities
3 SCH	144 contact hours of approved translational science training activities

Selection of Practicum Activities

There are no restrictions for selecting activities for the practicum. Activities should focus on one main area of interest which will help the course participant to develop knowledge or skills of characteristics of a translational scientist. The goal is to gain understanding of the area in depth. Activities should be tailored to the interest and area of research of the course participant.

Examples of activities include understanding the IRB, IACUC procedures, Office of Technology Commercialization, Clinical Trials Office, shadowing in the clinic or a clinical trial, community engagement, policy, etc. Activities could include experiencing knowledge from didactic courses, developing new procedures, and hand-on experiences.

The course participant will make their own arrangements for the activities.

Activities should not overlap with thesis research.

Materials:

Based on the requirements of the individual student's planned activities as approved by the course director.

Computer Requirements:

Students are required to have a laptop computer that can connect to and operate over a wireless network.

Software required:

- Microsoft Office Suite (A personal copy of the latest version can be purchased at The UTHSA bookstore at student pricing with a student ID)

Laptops with an Apple based Operating System must be able to also operate using a Windows based Operating System. It may be necessary to purchase Windows (student pricing available at The UTHSA bookstore with a student ID) and virtualization software.

All laptops will connect to The UTHSA network *via* the HSCwave broadcast wireless connection. Authentication for wireless use is based on The UTHSA domain username and password.

Verification of proper operation **prior** to the start of class is highly recommended.

Assistance is available thru the IMS Service Desk

- Telephone: (567-7777)
- E-mail (ims-servicedesk@uthscsa.edu)

Assistance is also available at the IMS Student Support Center (ALTC 106).

Reading Assignments – Reading assignments will be based on the requirements of the individual student's planned activities as approved by the course director.

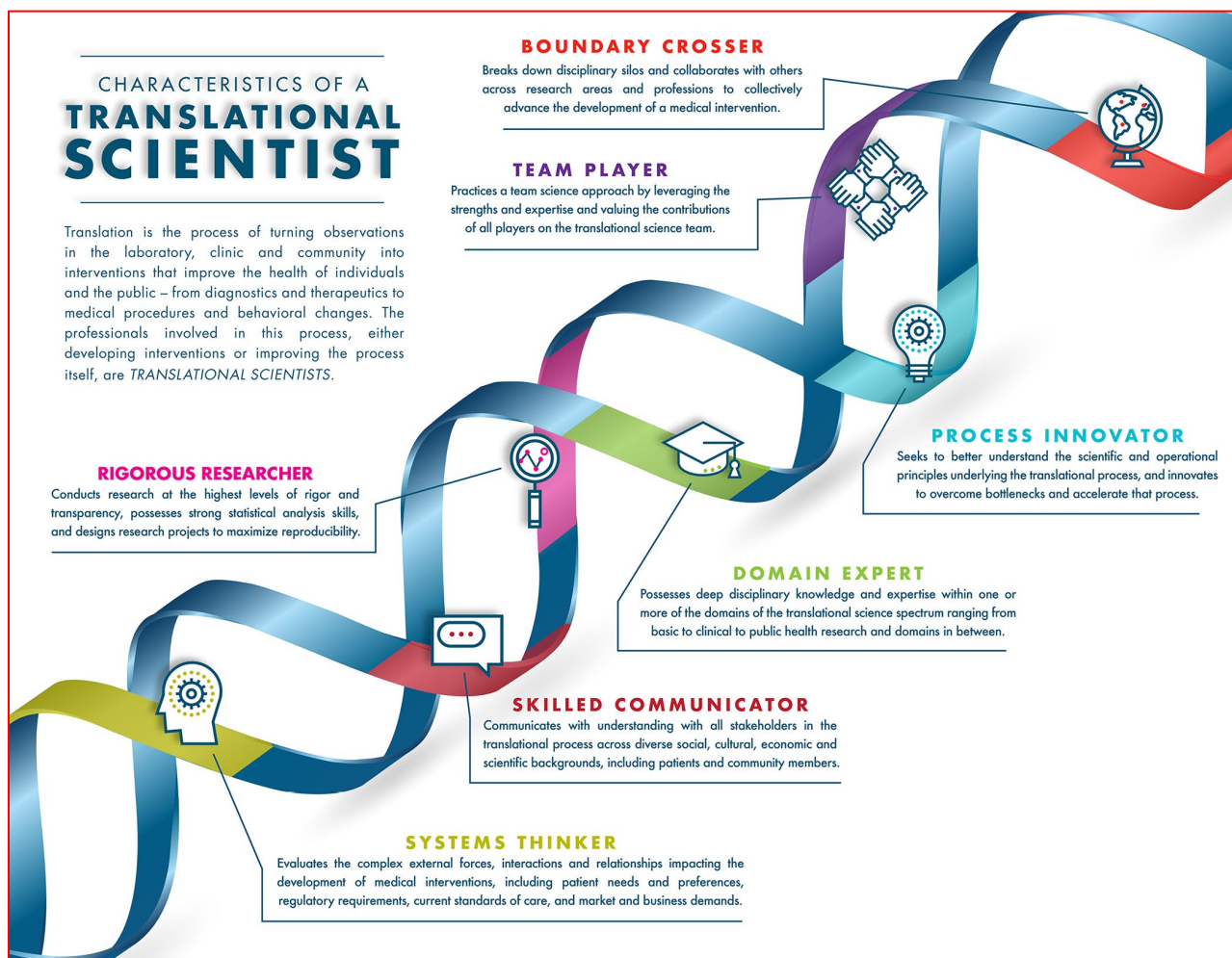
ATTENDANCE

The student must complete 48 – 144 contact hours of their practicum planned activities and provide a monthly report of activities for approval by the course director.

How to select Practicum Activities?

The article by Gillilan et al. (2019) describes 7 characteristics of a translational scientist.

- Domain Expert: Possesses deep disciplinary knowledge and expertise within one or more of the domains of the translational science spectrum ranging from basic to clinical to public health research and domains in between.
- Boundary Crosser: Breaks down disciplinary silos and collaborates with others across research areas and professions to collectively advance the development of a medical intervention.
- Team Player: Practices a team science approach by leveraging the strengths and expertise and valuing the contributions of all players on the translational science team.
- Process Innovator: Seeks to better understand the scientific and operational principles underlying the translational process and innovates to overcome bottlenecks and accelerate that process.
- Skilled Communicator: Communicates clearly with all stakeholders in the translational process across diverse social, cultural, economic, and scientific backgrounds, including patients and community members.
- Systems Thinker: Evaluates the complex external forces, interactions, and relationships impacting the development of medical interventions, including patient needs and preferences, regulatory requirements, current standards of care, and market and business demands.
- Rigorous Researcher: Conducts research at the highest levels of rigor and transparency within their field of expertise, possesses strong statistical analysis skills, and designs research projects to maximize reproducibility.



The Practicum activities should be designed to build on one or more of the characteristics of a translational scientist. Participants are advised to plan strategically.

Gilliland CT, White J, Gee B, Kreeftmeijer-Vegter R, Bietrix F, Ussi AE, Hajduch M, Kocis P, Chiba N, Hirasawa R, Suematsu M, Bryans J, Newman S, Hall MD, Austin CP. The Fundamental Characteristics of a Translational Scientist. *ACS Pharmacol Transl Sci*. 2019 May 2;2(3):213-216. doi: 10.1021/acsptsci.9b00022. PMID: 32259057; PMCID: PMC7088880.

Absence for Religious Observance:

Students requesting an excused absence for religious holidays should follow the guidelines outlined in the UT Health Science Center Catalog.

TEXTBOOKS

Textbooks are not required; unless required for the student's individual planned activities.

GRADING POLICIES AND EXAMINATION PROCEDURES

Completion of 48 – 144 contact hours of the student's planned activities as approved by the course director along with submission of the monthly Student Activities form. The monthly report documents the completed activities and has to be submitted by the 5th of the following month. During the duration of the course a report for each month has to be submitted, even if '0' hours were completed. The monthly report has to be signed by the participant and their mentor.

At completion of the Course (TSCI 5077) students are required to submit a reflective essay to the course director. The essay of the Translational Science Practicum should detail and highlight the skills and knowledge gained by the course participant from activities completed in this practicum.

What are the translational science characteristics (Gilliland CT, et al. 2019) that the participant worked on to improve your skillset as a translational scientist?

How will these skills help the participant in her/his/their future career development?

Length: 2 paragraphs

The report has to be uploaded on Canvas.

Grading System

The grading will be conducted on a pass/fail basis and all assignments need a Satisfactory in order to pass the course.

S = Satisfactory U = Unsatisfactory

An 'Honors/distinction' label will be added to the grade for a thoughtful essay demonstrating deep engagement and reflections.

REQUESTS FOR ACCOMODATIONS FOR *DISABILITIES*

In accordance with policy 4.2.3, **Request for Accommodation Under the ADA and the ADA Amendments Act of 2008 (ADAAA)**, any student requesting accommodation must submit the appropriate request for accommodation under the American with Disabilities Act (ADA, form 100). To his/her appropriate Associate Dean of their School and a copy to the ADA Coordinator. Additional information may be obtained at <http://uthscsa.edu/eeo/request.asp>.

ACADEMIC INTEGRITY AND PROFESSIONALISM

Any student who commits an act of academic dishonesty is subject to discipline as prescribed by the UT System Rules and Regulations of the Board of Regents. Academic dishonesty includes, but is not limited to, cheating, plagiarism, collusion, the submission for credit of any work or materials that are attributable in whole or in part to another person, taking an exam for another person, signing attendance sheets for another student, and any act designed to give unfair advantage to a student or the attempt to commit such an act. Additional information may be obtained at <http://catalog.uthscsa.edu/generalinformation/generalacademicpolicies/academicdishonestypolicy/>

TITLE IX AT UTHSA

Title IX Defined:

Title of the Education Amendments of 1972 is a federal law that prohibits sex discrimination in education. It reads “no person in the United States shall, on the basis of sex, be excluded from participation in, be denied the benefits of, or be subjected to discrimination under any education program or activity receiving Federal financial assistance.”

University of Texas Health San Antonio’s Commitment:

University of Texas Health San Antonio (UTHSA) is committed to maintaining a learning environment that is free from discriminatory conduct based on gender. As required by Title IX, UTHSA does not discriminate on the basis of sex in its education programs and activities, and it encourages any student, faculty, or staff member who thinks that he or she has been subjected to sex discrimination, sexual harassment (including sexual violence) or sexual misconduct to immediately report the incident to the Title IX Director.

In an emergency, victims of sexual abuse should call 911. For non-emergencies, they may contact UPD at 210-567-2800. Additional information may be obtained at <http://students.uthscsa.edu/titleix/>

E-MAIL POLICY

Every student is issued a University “LiveMail” e-mail address and account at the time when the student first enrolls. As a standing University Policy, only the students' University “LiveMail” e-mail address shall be used for any electronic institutional communications of an official nature.

USE OF RECORDING DEVICES

Recording of any activities in this course by any means, *e.g.*, video, audio, etc., is not permitted unless approved by the instructor or required for compliance with the American with Disabilities Act (ADA).

ELECTRONIC DEVICES

Cell phones, pagers, etc. should be turned to vibrate during learning activities. Computers and electronic tablets are allowed only for participating in learning activities (*e.g.*, viewing slides presented in lecture or conference materials). No texting, tweeting, e-mailing, web-surfing, gaming, or any use of electronic devices that is not directly connected with classroom activities is permitted.